

Field Target: H&N Baracuda .20 Caliber



H&N Baracuda .20 Caliber

Heavy, very accurate pellet for long ranges. First-class aerodynamic design for high impact and penetration. Tight shot groups. Lowest rate of lead fouling and consistent shot spreads thanks to special alloy and lubrication Smooth.

Specifications*

| Cal. 20 (5,0 mm) | Muzzle | 25 Yards | 50 Yards |
|-------------------------------------|--------|----------|----------|
| Velocity (fps) | 804 | - | - |
| Kinetic Energy [ft x lbs] | 11.8 | - | - |
| Ballistic Soap Penetration (inches) | - | 9.252 | - |
| Ballistic Soap Expansion (inches) | - | 0.394 | - |
| 10-Schot Grouping (inches) | - | 0.55 | - |
| Pellet Weight [grain] | 13.27 | | |
| Headsizes [inches] | 0.198 | | |
| Footsize [inches] | 0.210 | | |
| B/C | 0.027 | | |

Performance: Grouping*



H&N Baracuda .20 Caliber

*Test rifle: Walther Dominator (11.8 ft.lbs); distance 25 yds.



HAENDLER & NATERMANN SPORT GMBH

HAENDLER & NATERMANN SPORT GMBH

Kasseler Strasse 2 34346 Hann. Münden Germany

Tel. +49 (0) 5541 704-426

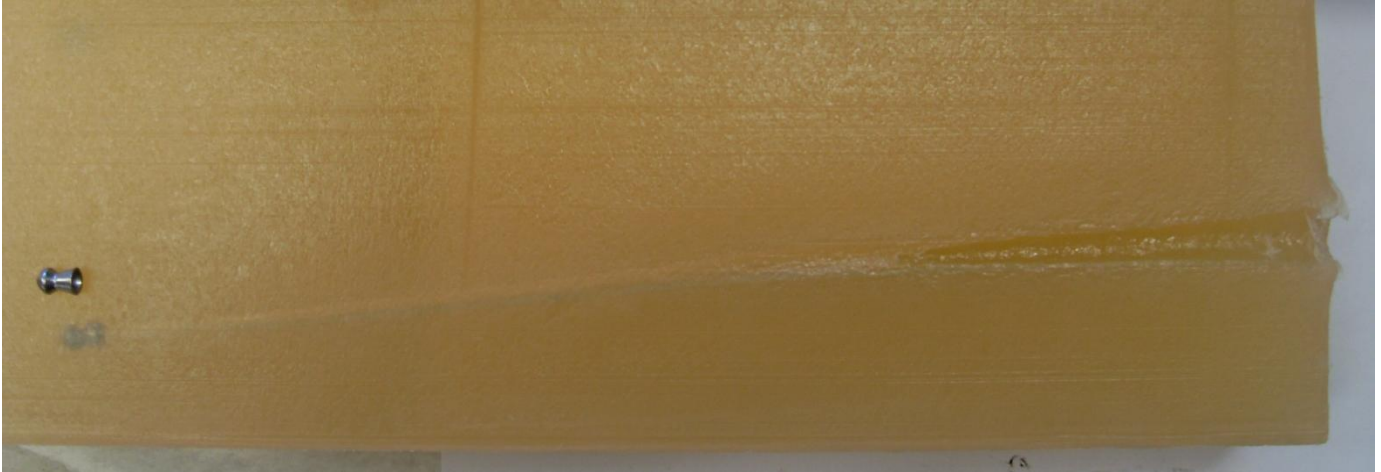
Fax +49 (0) 5541 704-226

Mail info@hn-sport.de

Web www.hn-sport.de

Field Target: H&N Baracuda .20 Caliber

Performance – Penetration*



*Test rifle: BSA Sportsman HV (18 ft.lbs); distance 25 yds.