

Field Target: H&N Baracuda .20 Caliber



H&N Baracuda .20 Caliber

Heavy, very accurate pellet for long ranges. First-class aerodynamic design for high impact and penetration. Tight shot groups. Lowest rate of lead fouling and consistent shot spreads thanks to special alloy and lubrication Smooth.

Specifications*

Cal. 20 (5,0 mm)	Muzzle	25 Yards	50 Yards
Velocity (fps)	804	-	-
Kinetic Energy [ft x lbs]	11.8	-	-
Ballistic Soap Penetration (inches)	-	9.252	-
Ballistic Soap Expansion (inches)	-	0.394	-
10-Schot Grouping (inches)	-	0.55	-
Pellet Weight [grain]	13.27		
Headsizes [inches]	0.198		
Footsize [inches]	0.210		
B/C	0.027		

Performance: Grouping*



H&N Baracuda .20 Caliber

*Test rifle: Walther Dominator (11.8 ft.lbs); distance 25 yds.



HAENDLER & NATERMANN SPORT GMBH

HAENDLER & NATERMANN SPORT GMBH

Kasseler Strasse 2 34346 Hann. Münden Germany

Tel. +49 (0) 5541 704-426

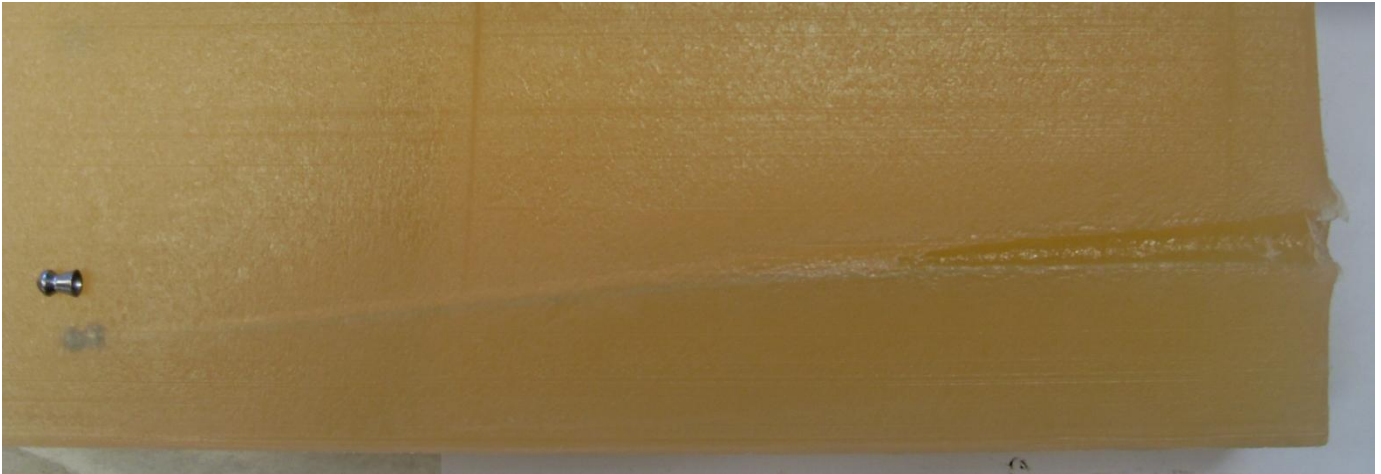
Fax +49 (0) 5541 704-226

Mail info@hn-sport.de

Web www.hn-sport.de

Field Target: H&N Baracuda .20 Caliber

Performance – Penetration*



*Test rifle: BSA Sportsman HV (18 ft.lbs); distance 25 yds.